



Oilfield Equipment Marketing, Inc.
4711 Dodge Street, San Antonio, Texas 78217
Tel: 210.657.7607 Fax: 210.657.3660
E-mail: sales@oem-usa.com Web: www.oem-usa.com

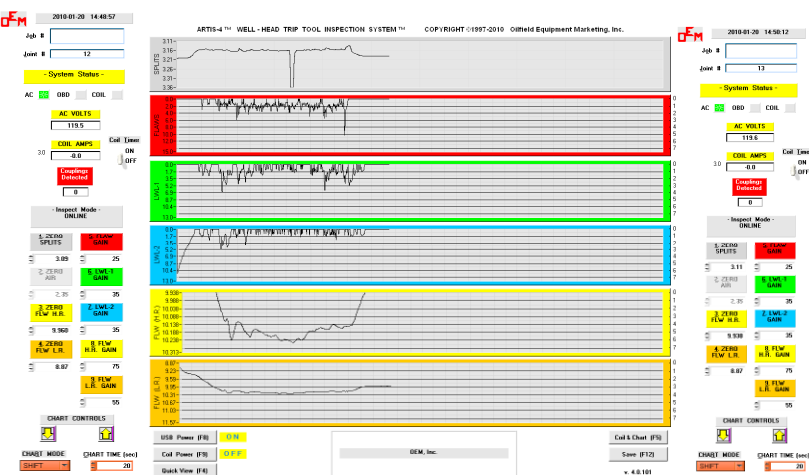
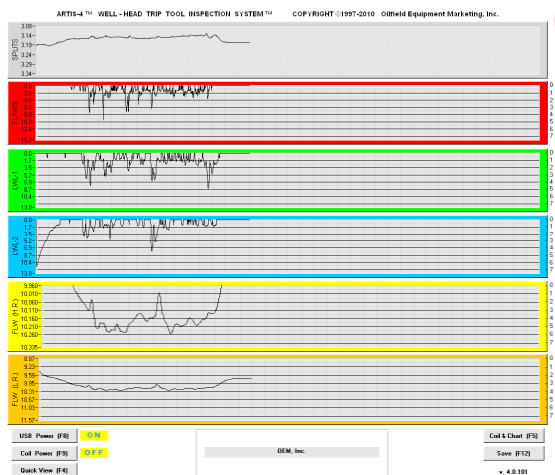
ARTIS-4 TRIP TOOL - BETTER THAN THE REST !

The *-ONLY-* SIX (6) Function Well - Head Inspection Unit Available !

1. The OEM TRIP TOOL is designed to inspect for Internal PITTING (LWL-2). Magnetic technology, 100% non-contact, no spare shoes to purchase, 360 degree coverage.
 2. The TRIP TOOL is designed to inspect for Transverse FLAWS (3/16" diameter and larger) for small diameter pitting and thru holes. Magnetic technology, 100% non-contact, no spare shoes to purchase, 100% circumferential coverage, no moving parts.
 3. The TRIP TOOL is designed to inspect for RODWEAR (FLW-HR). Magnetic technology, 100% non-contact, no spare shoes to purchase, 360 degree coverage, no moving parts.
 4. The TRIP TOOL provides a Body Wall Monitoring Function (FLW-LR): inspection for large area wall loss. This "thick-thin" wall monitoring inspection function provides 360° of coverage, magnetic technology, 100% non-contact, no spare shoes to purchase, 360 degree coverage, no moving parts.
 5. The TRIP TOOL is designed to inspect for External PITTING (LWL-1). Magnetic technology, 100% non-contact, no spare shoes to purchase, 100% circumferential coverage.
 6. The TRIP TOOL is designed to inspect for longitudinal THRU-WALL SPLITS, 3"-4" minimum length. Electromagnetic technology, 100% non-contact, 360 degree coverage.
- There is no gamma radiation used in the OEM TRIP TOOL inspection system.
 - Automatic calibration using digitally stored normalizing gains is possible because no old style analog electronics are used. Also, there are no shoes to wear which can cause a change in sensitivity. Shoe ride problems, which can provide false indications, are also absent from the TRIP TOOL since it is a 100% true non-contact EMI device.
 - The OEM Well Profile program is an integral part of the ARTIS-4 TRIP TOOL software package. There is no need to learn another software program. The end user can provide the Well Profile to their customer on disk, USB flash drive (thumb drive), CD, via email, etc. No special software is needed to view the Well Profile from disk. Typical web browsers, word processors, email programs, graphics editors etc. can be used to view, print and email the Well Profile from disk.
 - The OEM Inspection Reports package is an integral part of the ARTIS-4 TRIP TOOL software package. Detailed data can be logged for each job. There is no need to learn another software program. The end user can provide the Report to their customer on disk, USB flash drive (thumb drive), CD, via email, etc. No special software is needed to view the Report from disk. Typical web

browsers, word processors, email programs, text editors / viewers etc. can be used to view, print and email the Report from disk.

- The OEM On Board Diagnostics (OBD) system continuously monitors system integrity providing operator feedback for the primary system components which OBD monitors. OBD also provides continuous real time monitoring and feedback for the electromagnet – the most crucial component in the system. Without a sufficiently strong magnetic field, nothing else matters!
- The system is extremely easy to use, no special computer knowledge is required. The unit is totally controlled from the computer keyboard. The system is highly integrated and very automated for normal use. Data handling is done by the system, freeing the operator from tedious file saving functions etc.
- All data may be printed and saved for review at a later time.
- The OEM ARTIS-4 TRIP TOOL is a culmination of more than 30 years of experience designing and building EMI pipe inspection equipment. OEM supplied the first commercially available electromagnetic well-head inspection system in February 1998.
- OEM calibrates to a known reference standard pipe. Other companies use hand-held electrical pulser units or solid bars of steel, which have no relationship to any actual defect.
- Other systems have inspection shoes which touch the pipe as it is tripped from the well, sometimes with wear buttons in the surface. These shoes may become damaged during use and create cost for the end user to replace or repair. OEM's TRIP TOOL does not have any inspection shoes to buy or repair as daily replacement parts. The system is a 100% true non contact system. During normal usage, the inspection sensors never come in contact with the pipe or couplings being tested. This unique feature also provides a better quality inspection for the end recipient of the inspection service because there are no shoes to fail during the inspection job. Other systems with contact shoes which can fail create standby time while the inspection company replaces the damaged device(s). Additionally, failed inspection shoes provide less inspection coverage if the damaged shoes are not replaced while the rest of the inspection job continues.
*** Many companies have paid tens of thousands of dollars to upgrade competitive well-head equipment they own, to include OEM's exclusive non-contact EMI technologies and powerful inspection functions, unmatched in the well-head inspection industry.
- The OEM TRIP TOOL has an exclusive built in Software Update feature. OEM periodically provides software upgrades to the TRIP TOOL customer when they are available. When our software technology is improved, the customer can take advantage of the newest features. It is easy to receive the small update files over the internet and the system updates itself like an Anti-Virus program. EASY! Software updates which apply to your specific model TRIP TOOL are typically FREE for the end user.
- The OEM TRIP TOOL unit can inspect water filled “wet” pipe or sanded in pipe strings. Systems which use gamma radiation can not because the gamma radiation device can not obtain valid readings through the water or sand. This same capability extends to lined pipe!
- ONLY OEM has a TRUE 100% computerized system...all system functions are easily controlled from the computer keyboard.



THE INFORMATION IN THIS OILFIELD EQUIPMENT MARKETING, INC. (OEM) DOCUMENT IS PROVIDED "AS IS" WITHOUT WARRANTY OF ANY KIND AND IS SUBJECT TO CHANGE WITHOUT NOTICE. OEM DISCLAIMS ALL WARRANTIES EITHER EXPRESSED OR IMPLIED, INCLUDING THE WARRANTIES OF MERCHANTABILITY OR FITNESS FOR A PARTICULAR PURPOSE. OEM DOES NOT SUPPORT THE USE OF ANY NON DESTRUCTIVE TESTING EQUIPMENT WITHOUT THE USE OF INDUSTRY STANDARD PROVE-UP TOOLS, TECHNIQUES, PROCEDURES AND METHODS. ARTIS-4 TRIP TOOL – BETTER THAN THE REST: ©2001-2010 OILFIELD EQUIPMENT MARKETING, INC. ALL RIGHTS RESERVED. REVISED 04-10-2010.